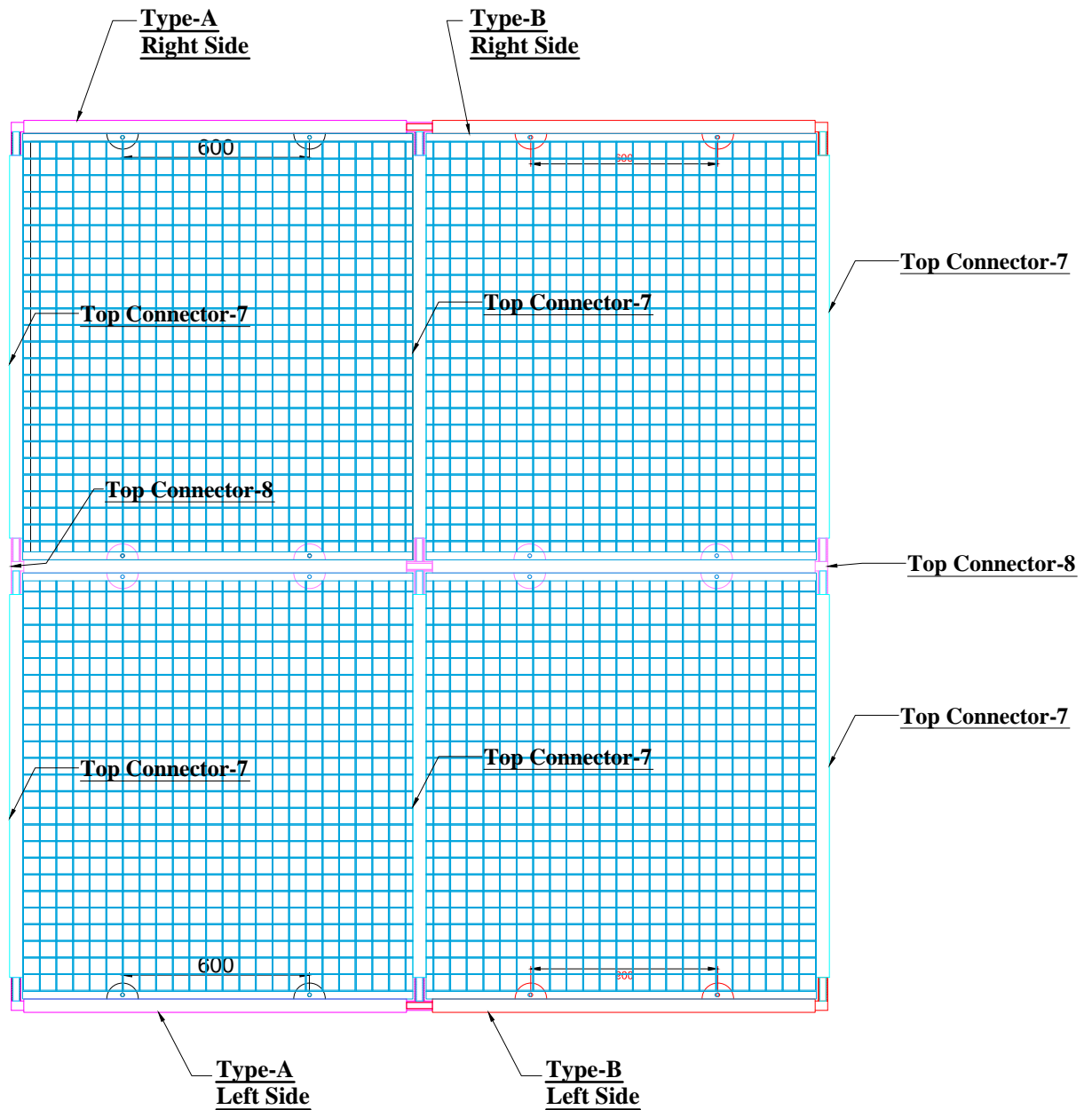
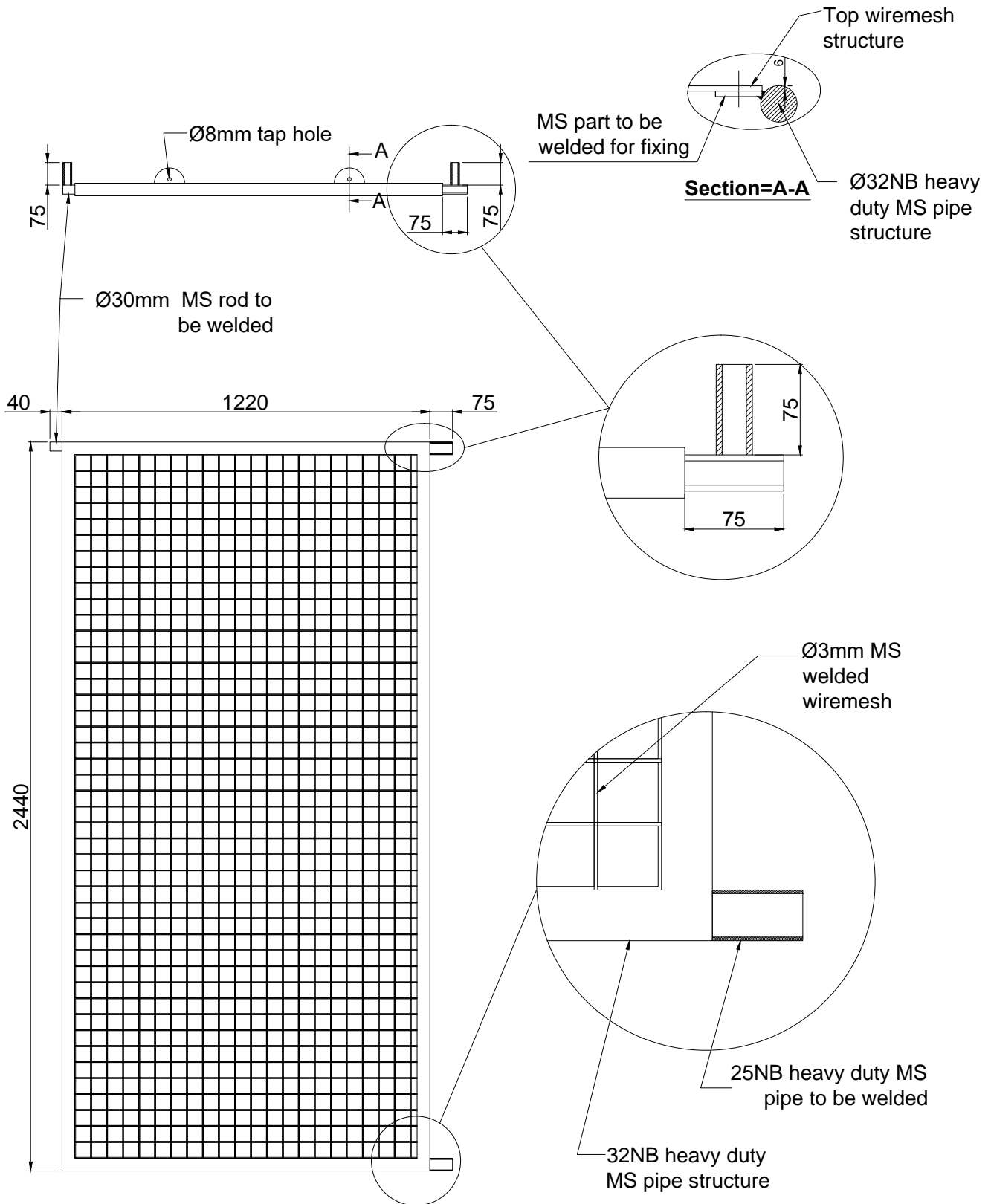


Technical Specification & Drawing
Structure II



Wiremesh Structure-2

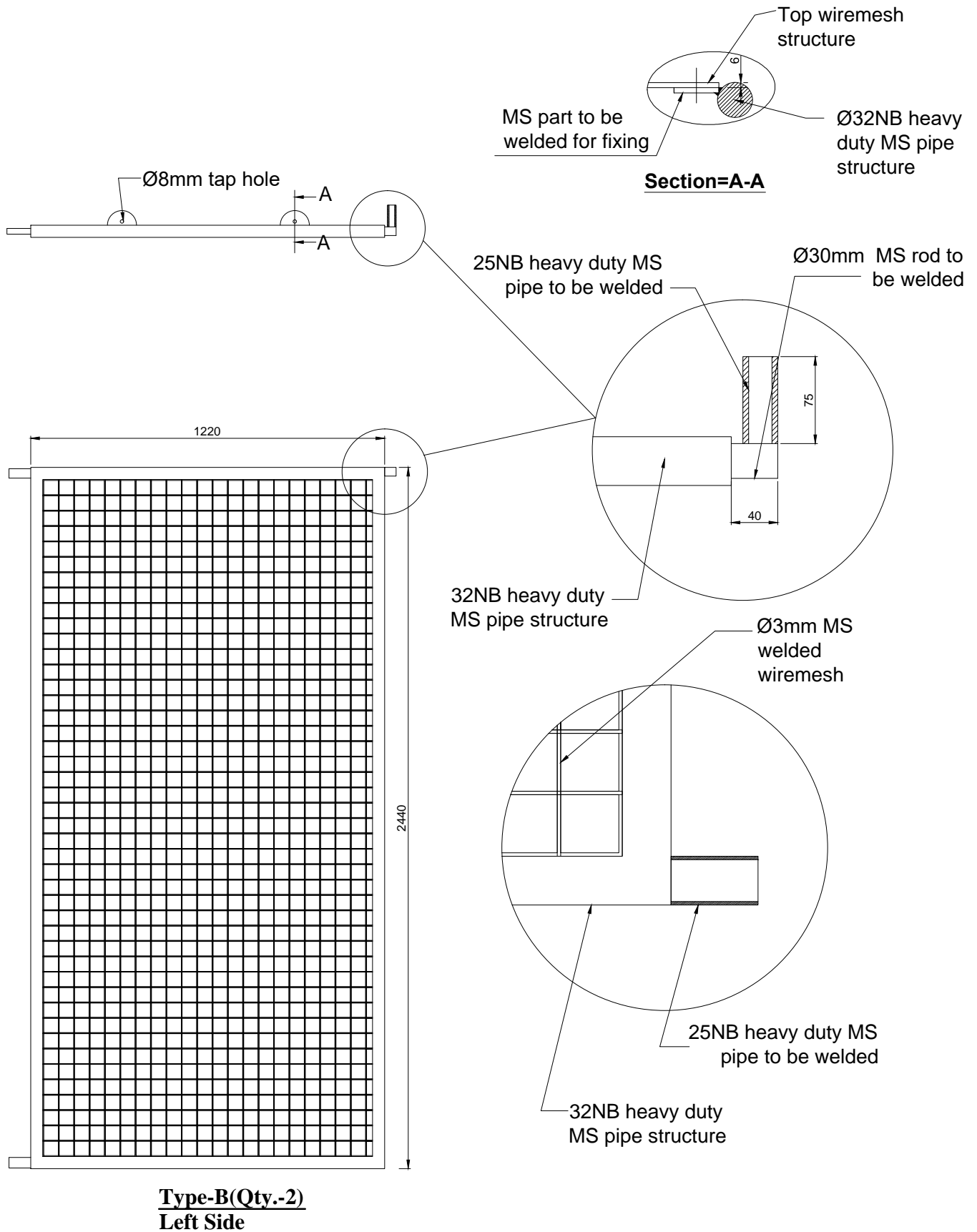


Type-A(Qty.-2)
Left Side

Note:-

- 1) The entire structure metal should be paint finished using approved colour and shade of MRF brand with two or more coats on primer/surfacer of similar make.
- 2) All welded joints of pipe structure should be highly finished.
- 3) All connectors must be aligned properly for all joints.

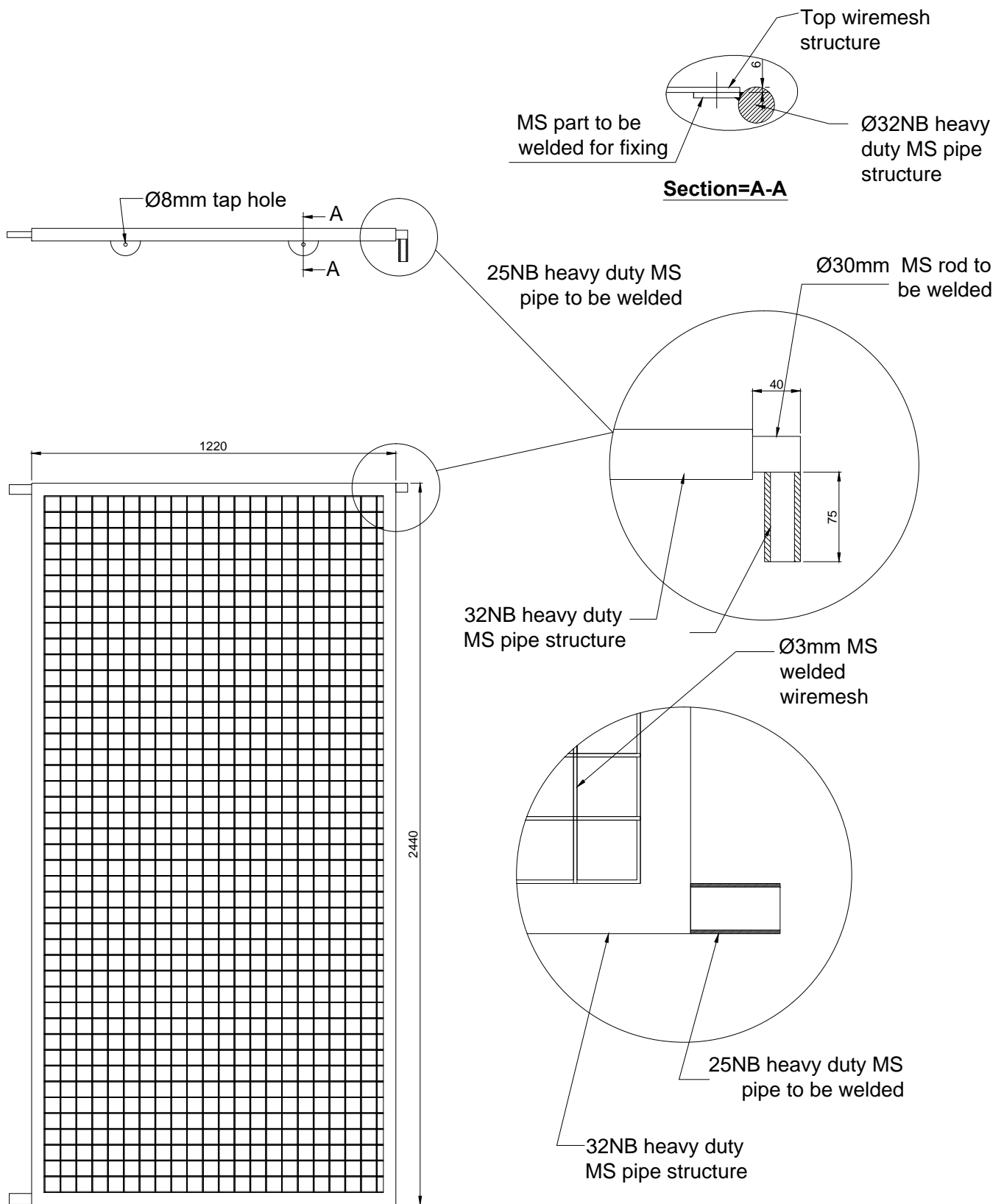
NATIONAL COUNCIL OF SCIENCE MUSEUMS			
UNIT: C.R.T.L.		PROJ.- CRTL	
DRG. NO. EX.MN/01/01/23/M	DATE 31/01/23	SCALE 0 : 00	TOLERANCE ± 0.25mm
TITLE:- Wiremesh Structure-2			NO OFF.
DRN. BY Minakshi Dutta	CKD. BY	APPRD. BY	



Note:-

- 1) The entire structure metal should be paint finished using approved colour and shade of MRF brand with two or more coats on primer/surfacer of similar make.
- 2) All welded joints of pipe structure should be highly finished.
- 3) All connectors must be aligned properly for all joints.

NATIONAL COUNCIL OF SCIENCE MUSEUMS			
UNIT: C.R.T.L.		PROJ.- CRTL	
DRG. NO. EX.MN/01/01/23/N	DATE 31/01/23	SCALE 0 : 00	TOLERANCE ± 0.25mm
TITLE:- Wiremesh Structure-2			NO OFF.
DRN. BY Minakshi Dutta	CKD. BY	APPRD. BY	

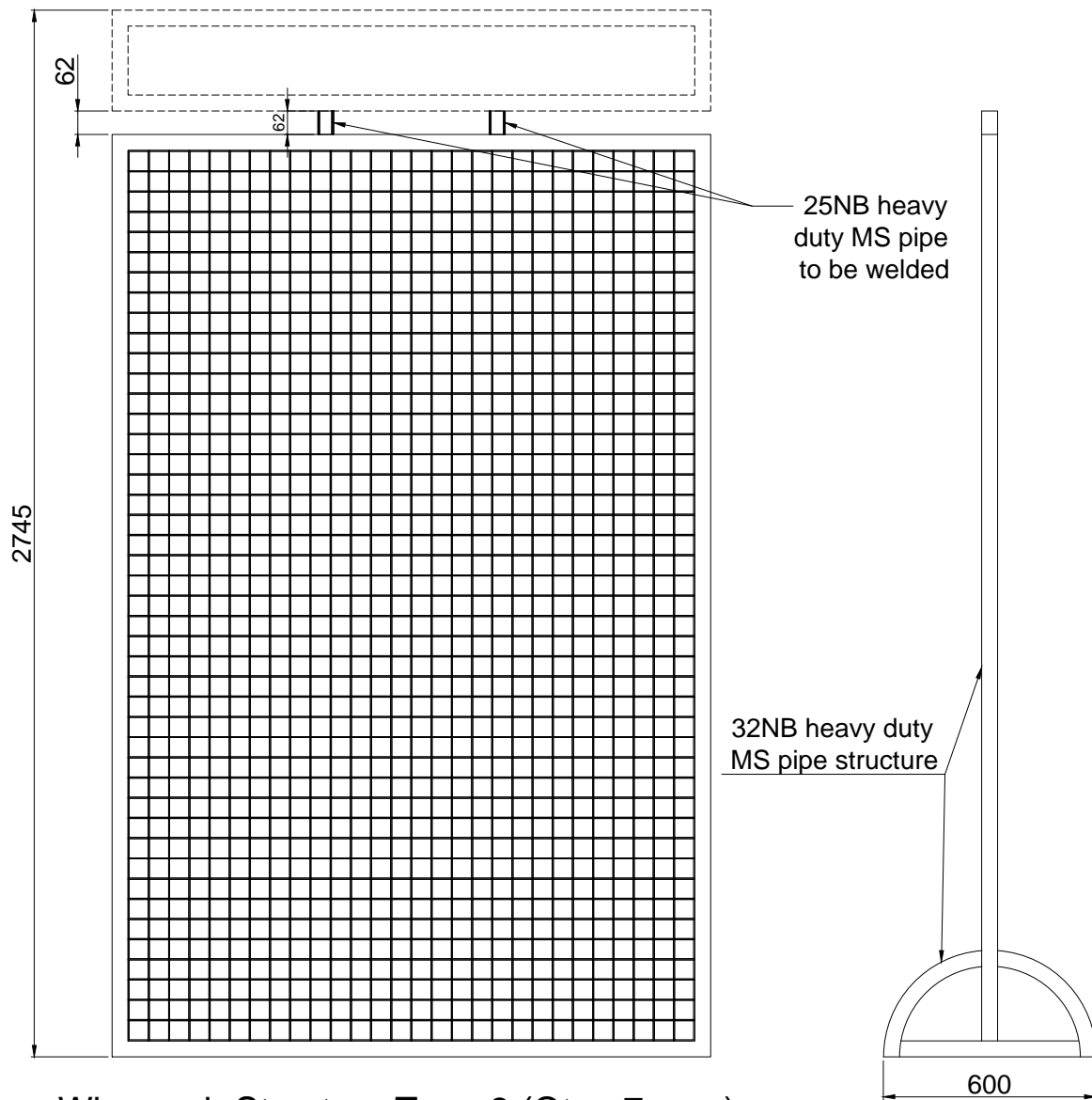


Type-B(Qty.-2)
Right Side

Note:-

- 1) The entire structure metal should be paint finished using approved colour and shade of MRF brand with two or more coats on primer/surfacers of similar make.
- 2) All welded joints of pipe structure should be highly finished.
- 3) All connectors must be aligned properly for all joints.

NATIONAL COUNCIL OF SCIENCE MUSEUMS			
UNIT: C.R.T.L.		PROJ.- CRTL	
DRG. NO. EX.MN/01/01/23/P	DATE 31/01/23	SCALE 0 : 00	TOLERANCE ± 0.25mm
TITLE:- Wiremesh Structure-2			NO OFF.
DRN. BY Minakshi Dutta	CKD. BY	APPRD. BY	

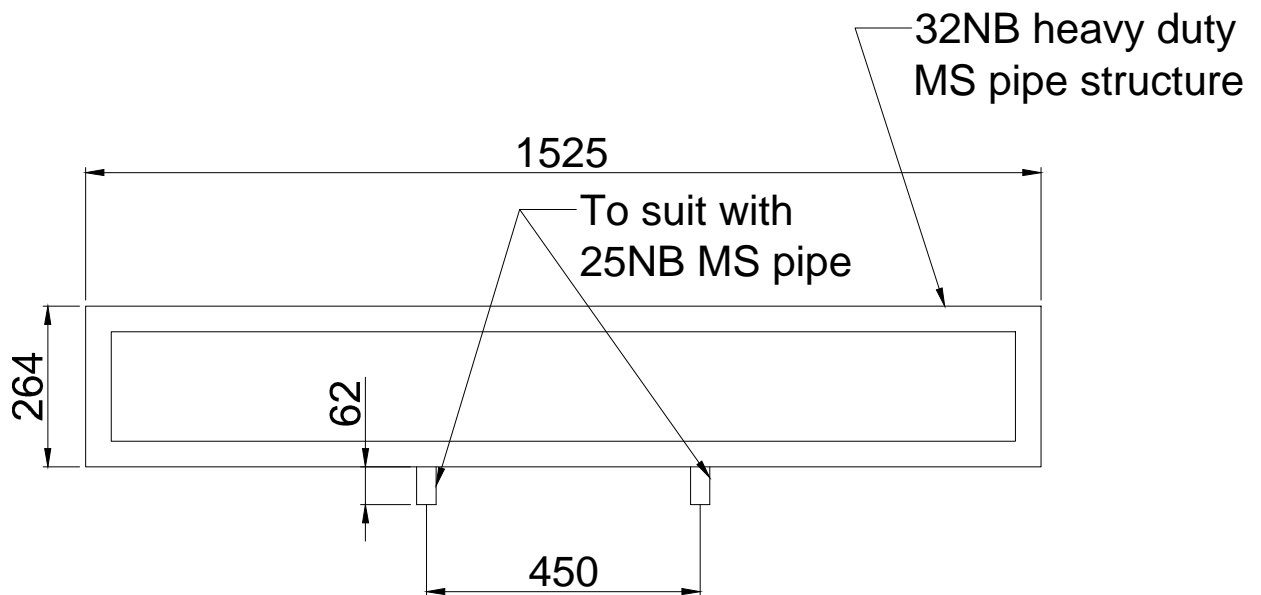


Wiremesh Structure Type-3 (Qty.- 7 nos.)

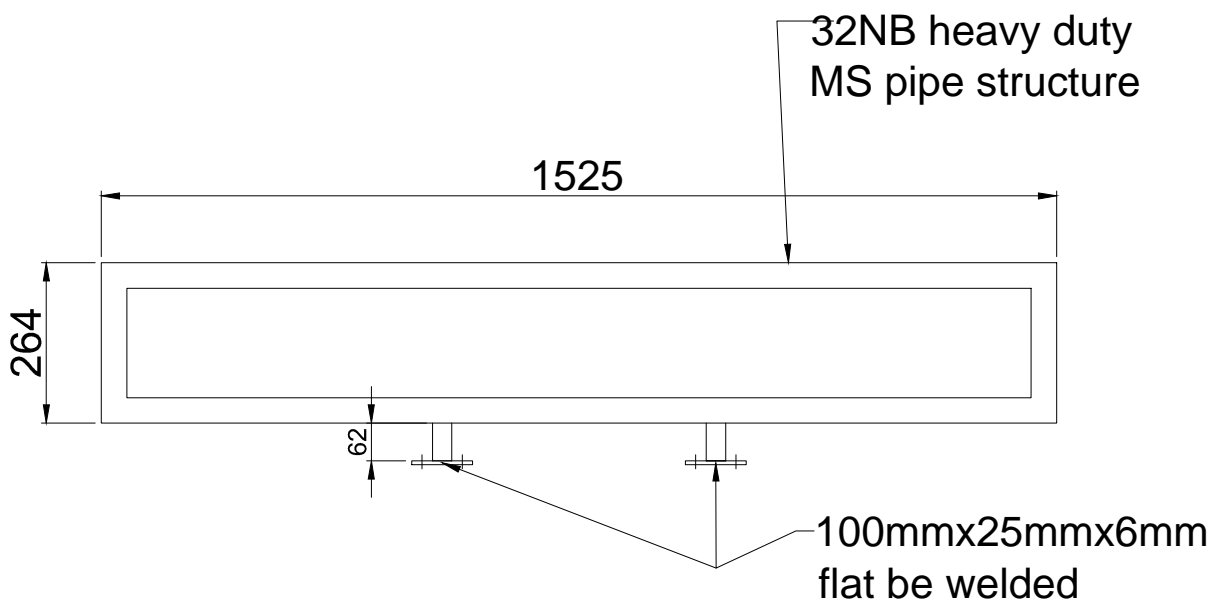
Note:-

- 1) The entire structure metal should be paint finished using approved colour and shade of MRF brand with two or more coats on primer/surfacers of similar make.
- 2) All welded joints of pipe structure should be highly finished.
- 3) All connectors must be aligned properly for all joints.

NATIONAL COUNCIL OF SCIENCE MUSEUMS			
UNIT: C.R.T.L.		PROJ.- CRTL	
DRG. NO. EX.MN/01/01/23/P	DATE 31/01/23	SCALE 0 : 00	TOLERANCE ± 0.25mm
TITLE:- Wiremesh Structure-3			NO OFF.
DRN. BY Minakshi Dutta	CKD. BY	APPRD. BY	



Type-A (Qty.- 7 nos.)

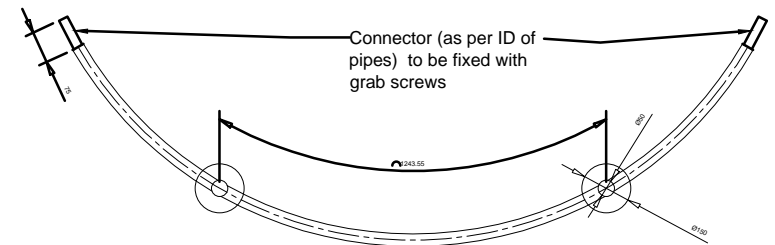


Type-B (Qty.- 6 nos.)

Note:-

- 1) The entire structure metal should be paint finished using approved colour and shade of MRF brand with two or more coats on primer/surfacer of similar make.
- 2) All welded joints of pipe structure should be highly finished.
- 3) All connectors must be aligned properly for all joints.

NATIONAL COUNCIL OF SCIENCE MUSEUMS			
UNIT: C.R.T.L.		PROJ.- CRTL	
DRG. NO. EX.MN/01/01/23/P	DATE 31/01/23	SCALE 0 : 00	TOLERANCE ± 0.25mm
TITLE:- Pipe Structure			NO OFF.
DRN. BY Minakshi Dutta	CKD. BY	APPRD. BY	




To be inserted
using ms connector
as per ID of pipes

To be inserted using ms connector as per ID of pipes

143.55

Technical drawing of a three-tier metal shelving unit. The unit consists of four vertical posts and three horizontal shelves. The top post is labeled "Ø75 MS ball" at the top and "Ø50 MS pipe" for the main shaft. The second post from the left is labeled "To be fixed with M6 tap" at the top and "Ø38mm MS pipe" for the main shaft. The third post is labeled "Ø75 MS collar" at the top. The shelves are labeled "Ø25mm MS pipe". The unit has a total height of 900mm, with shelves spaced at 300mm intervals. The base of the unit is labeled "6mm MS flange" and has a diameter of "Ø150".

NATIONAL COUNCIL OF SCIENCE MUSEUMS				
UNIT: C.R.T.L.		PROJ.- SCIENCE PARK		
DRG. NO. SP/03/05/2022/C	DATE 23/06/22	SCALE 0 : 00	TOLERANCE ±0.25mm	
TITLE:- MS Railing			NO OFF.	
DRN. BY MINAKSHI DUTTA		CKD. BY		APPRD. BY

