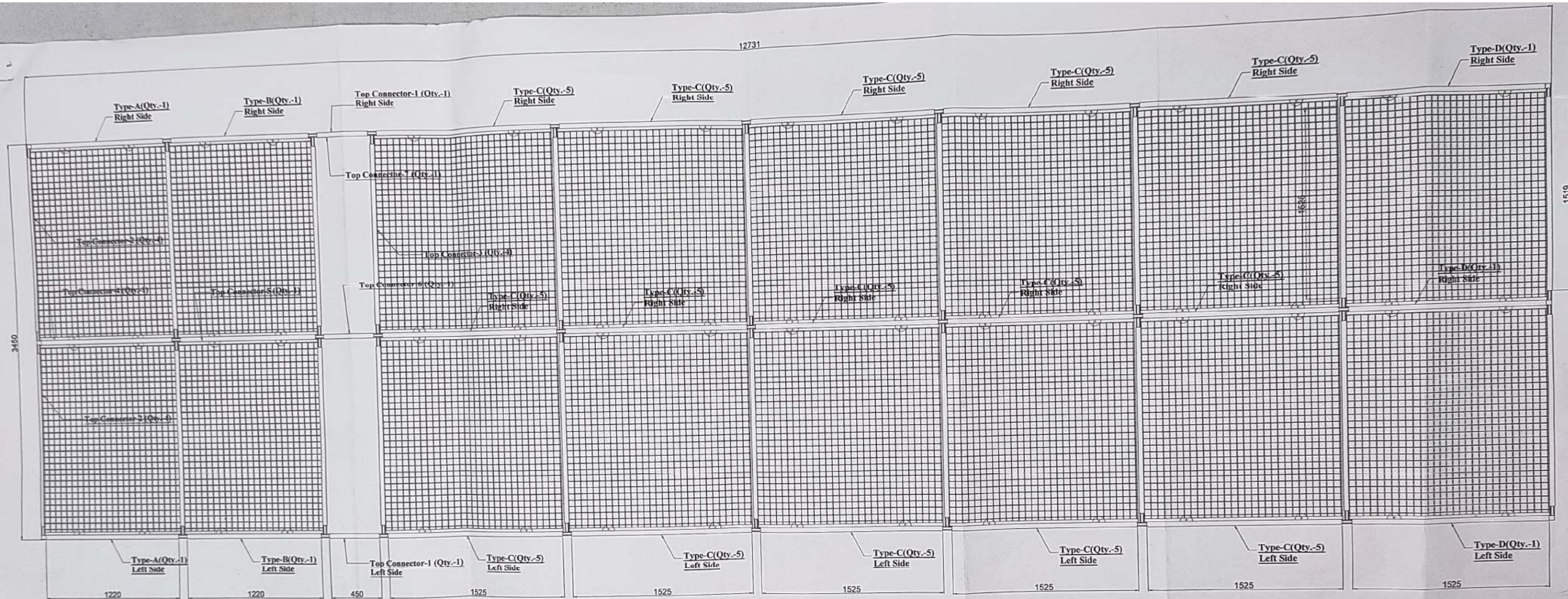
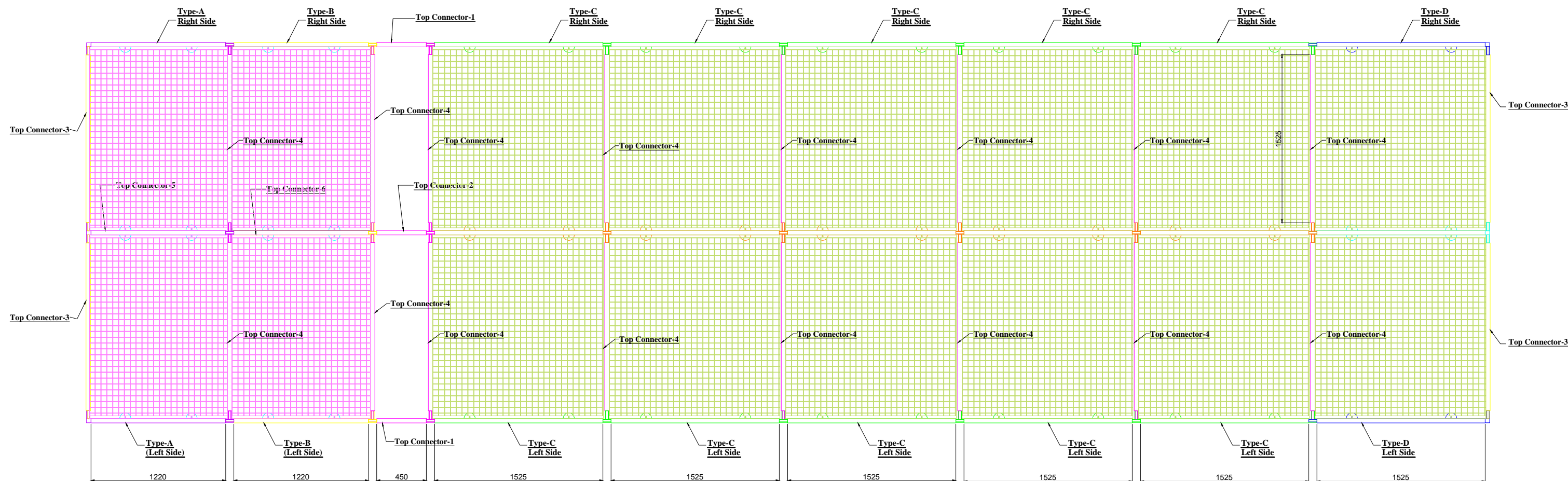


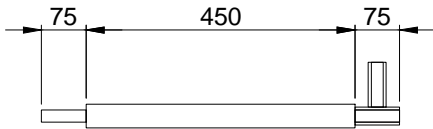
Technical Specification & Drawing Structure I



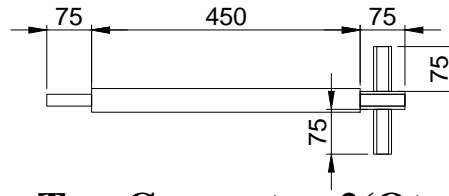
Wiremesh Structure-1



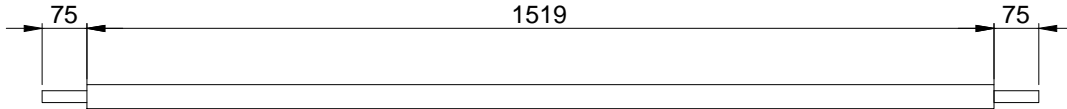
Wiremesh Structure-1



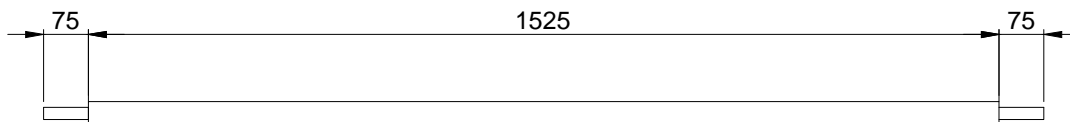
Top Connector-1 (Qty.-2)



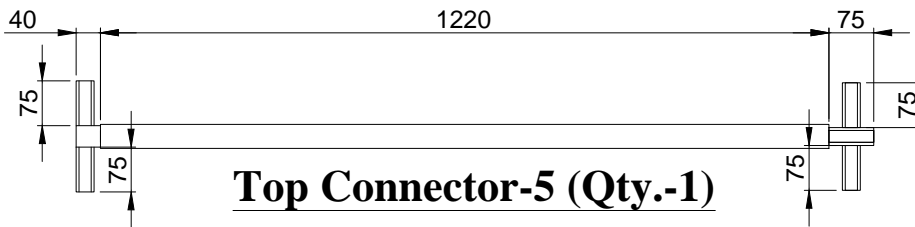
Top Connector-2 (Qty.-1)



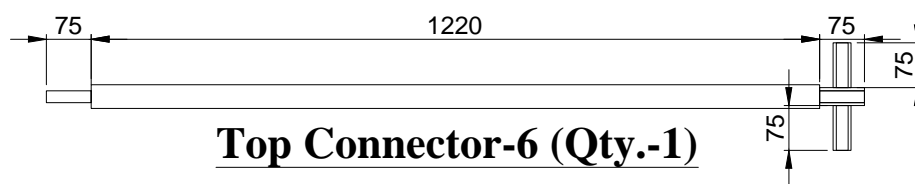
Top Connector-3 (Qty.-4)



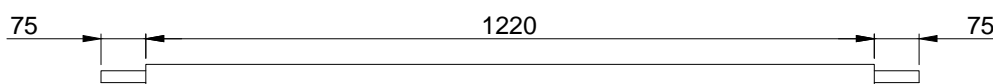
Top Connector-4 (Qty.-16)



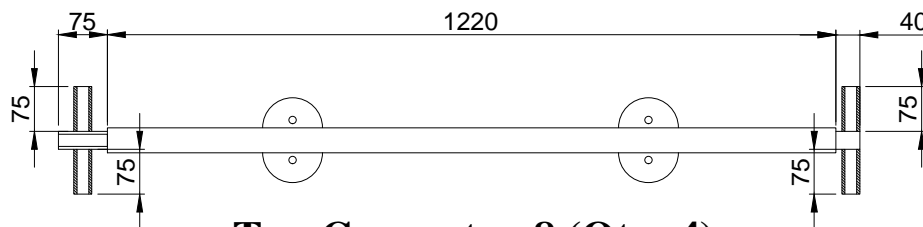
Top Connector-5 (Qty.-1)



Top Connector-6 (Qty.-1)



Top Connector-7 (Qty.-12)

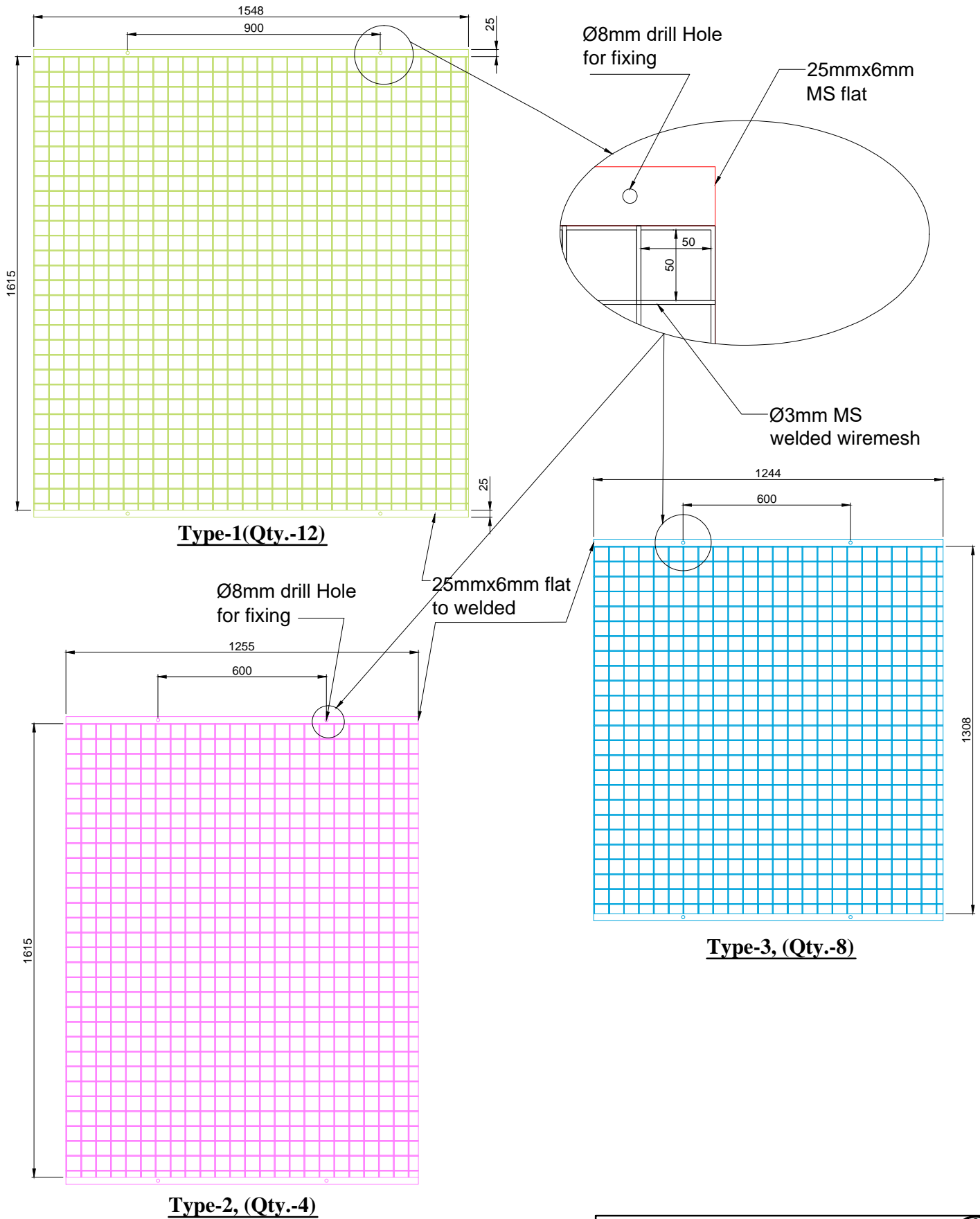


Top Connector-8 (Qty.-4)

Note:-

- 1) The entire structure metal should be paint finished using approved colour and shade of MRF brand with two or more coats on primer/surfacer of similar make.
- 2) All welded joints of pipe structure should be highly finished.

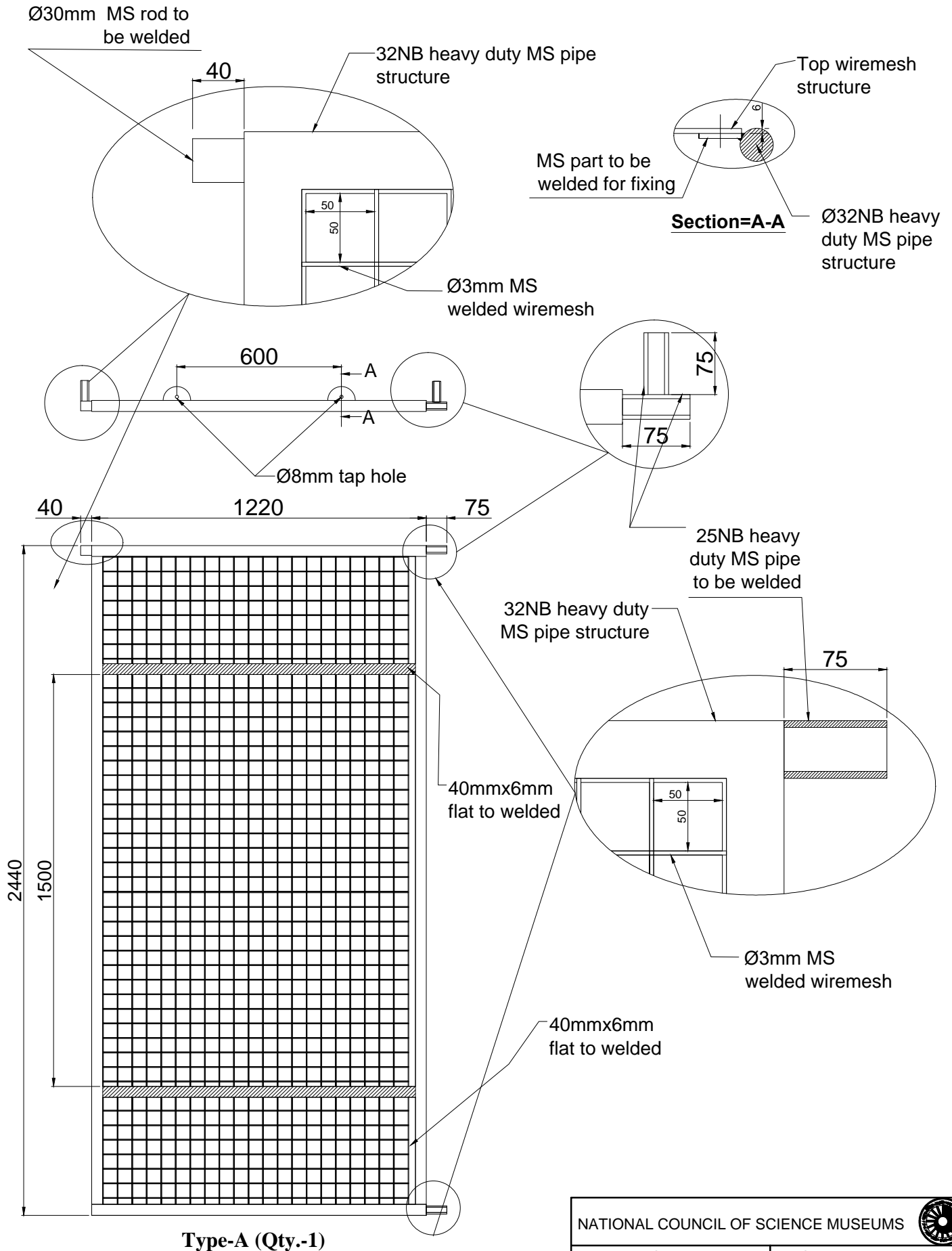
NATIONAL COUNCIL OF SCIENCE MUSEUMS			
UNIT: C.R.T.L.		PROJ.- CRTL	
DRG. NO. EX.MN/01/01/23/A	DATE 31/01/23	SCALE 0 : 00	TOLERANCE ± 0.25mm
TITLE:- Top Connector			NO OFF.
DRN. BY Minakshi Dutta		CKD. BY	APPRD. BY



Note:-

- 1) The entire structure metal should be paint finished using approved colour and shade of MRF brand with two or more coats on primer/surfacer of similar make.
- 2) All welded joints of pipe structure should be highly finished.

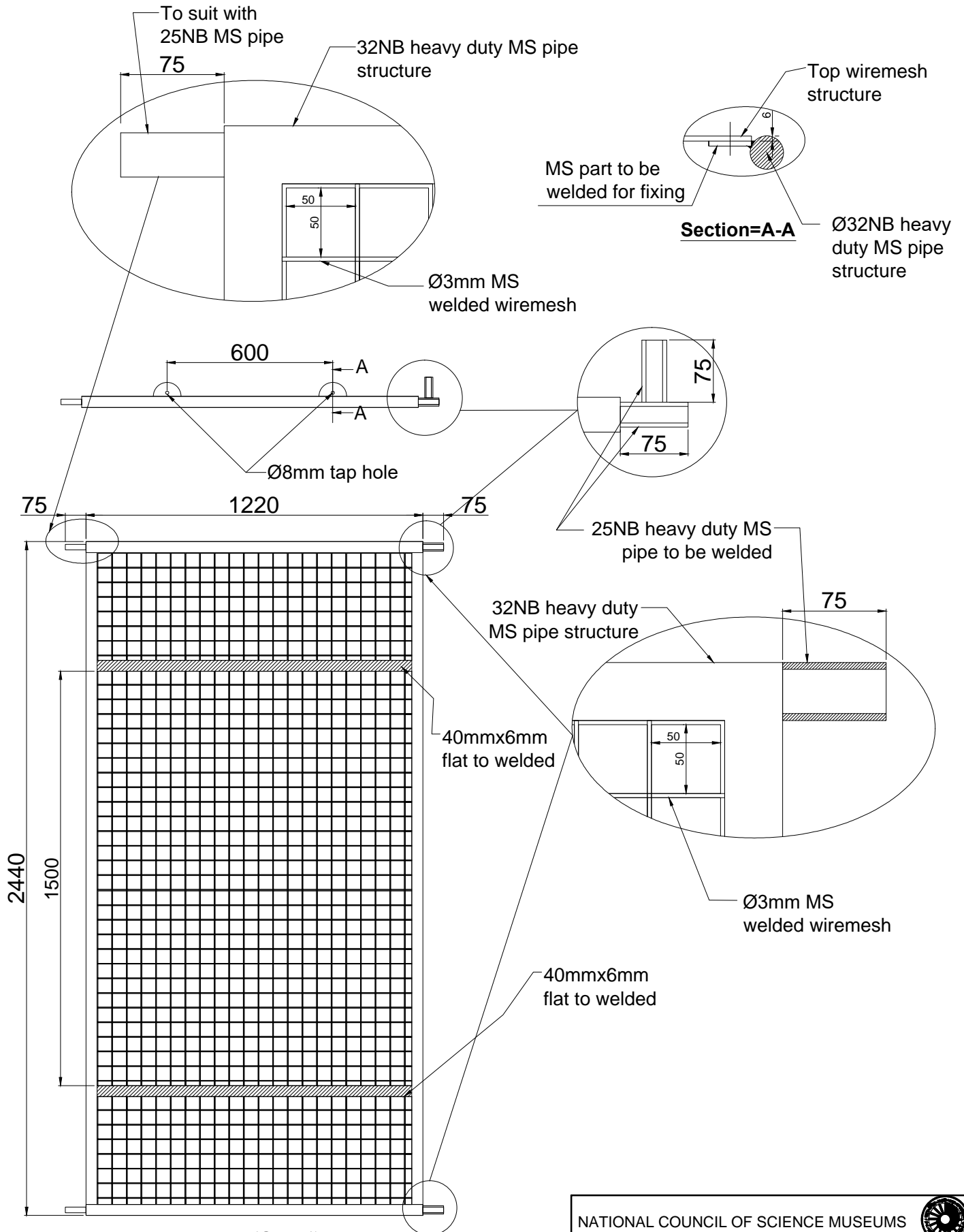
NATIONAL COUNCIL OF SCIENCE MUSEUMS			
UNIT: C.R.T.L.		PROJ.- CRTL	
DRG. NO. EX.MN/01/01/23/B	DATE 31/01/23	SCALE 0 : 00	TOLERANCE ± 0.25mm
TITLE:- Wiremesh Top structure			NO OFF.
DRN. BY Minakshi Dutta	CKD. BY	APPRD. BY	



Note:-

- 1) The entire structure metal should be paint finished using approved colour and shade of MRF brand with two or more coats on primer/surfacer of similar make.
- 2) All welded joints of pipe structure should be highly finished.

NATIONAL COUNCIL OF SCIENCE MUSEUMS			
UNIT: C.R.T.L.		PROJ.- CRTL	
DRG. NO. EX.MN/01/01/23/C	DATE 31/01/23	SCALE 0 : 00	TOLERANCE ± 0.25mm
TITLE:- Wiremesh Structure-1 Left side			NO OFF.
DRN. BY Minakshi Dutta	CKD. BY	APPRD. BY	

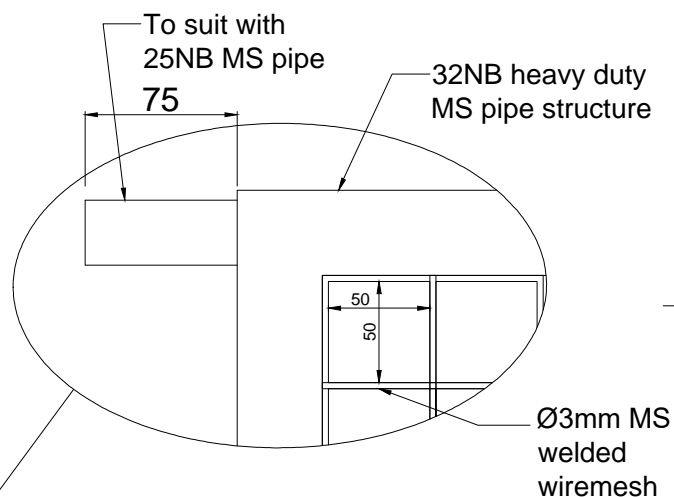


Type-B (Qty.-1)

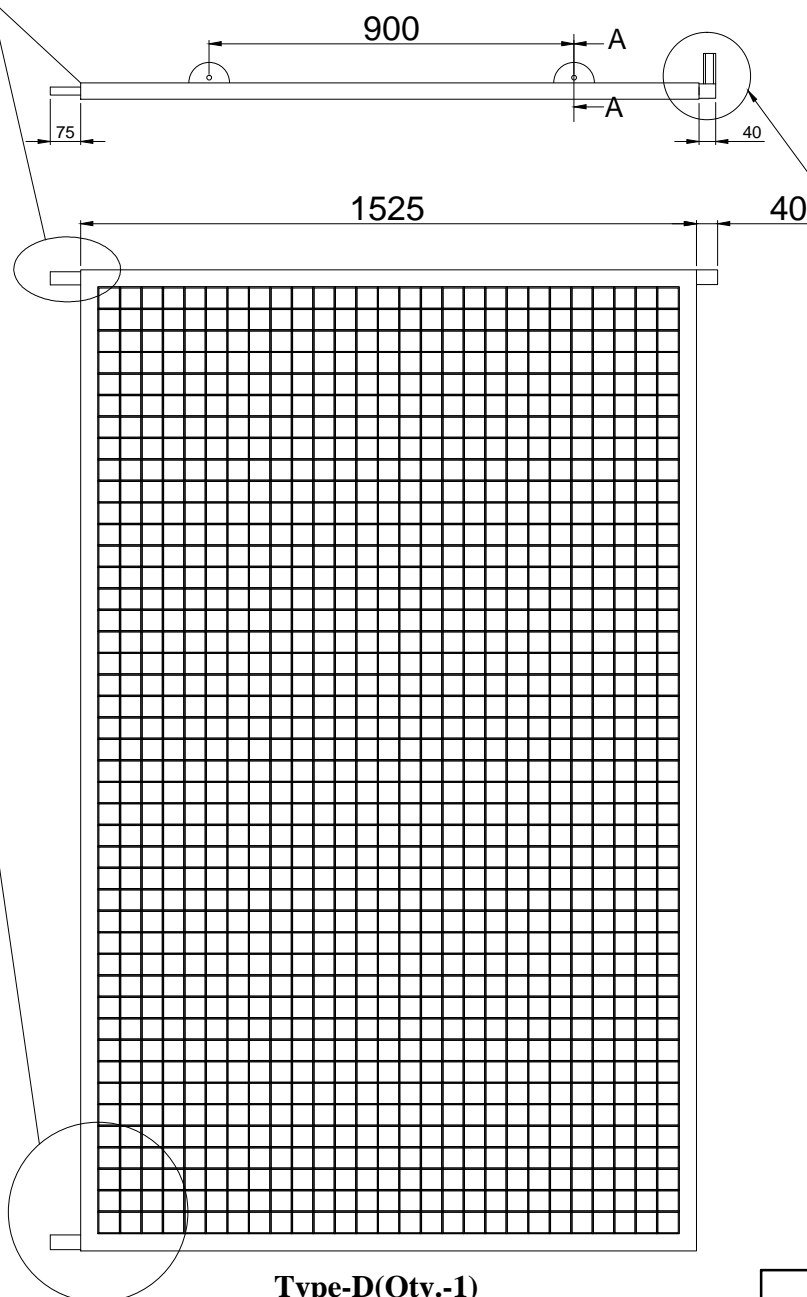
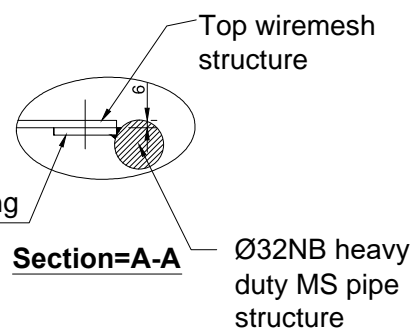
Note:-

- 1) The entire structure metal should be paint finished using approved colour and shade of MRF brand with two or more coats on primer/surfacers of similar make.
- 2) All welded joints of pipe structure should be highly finished.
- 3) All connectors must be aligned properly for all joints.

NATIONAL COUNCIL OF SCIENCE MUSEUMS			
UNIT: C.R.T.L.		PROJ.- CRTL	
DRG. NO. EX.MN/01/01/23/D	DATE 31/01/23	SCALE 0 : 00	TOLERANCE ± 0.25mm
TITLE:- Wiremesh Structure-1 Left side			NO OFF.
DRN. BY Minakshi Dutta		CKD. BY	APPRD. BY



MS part to be welded for fixing

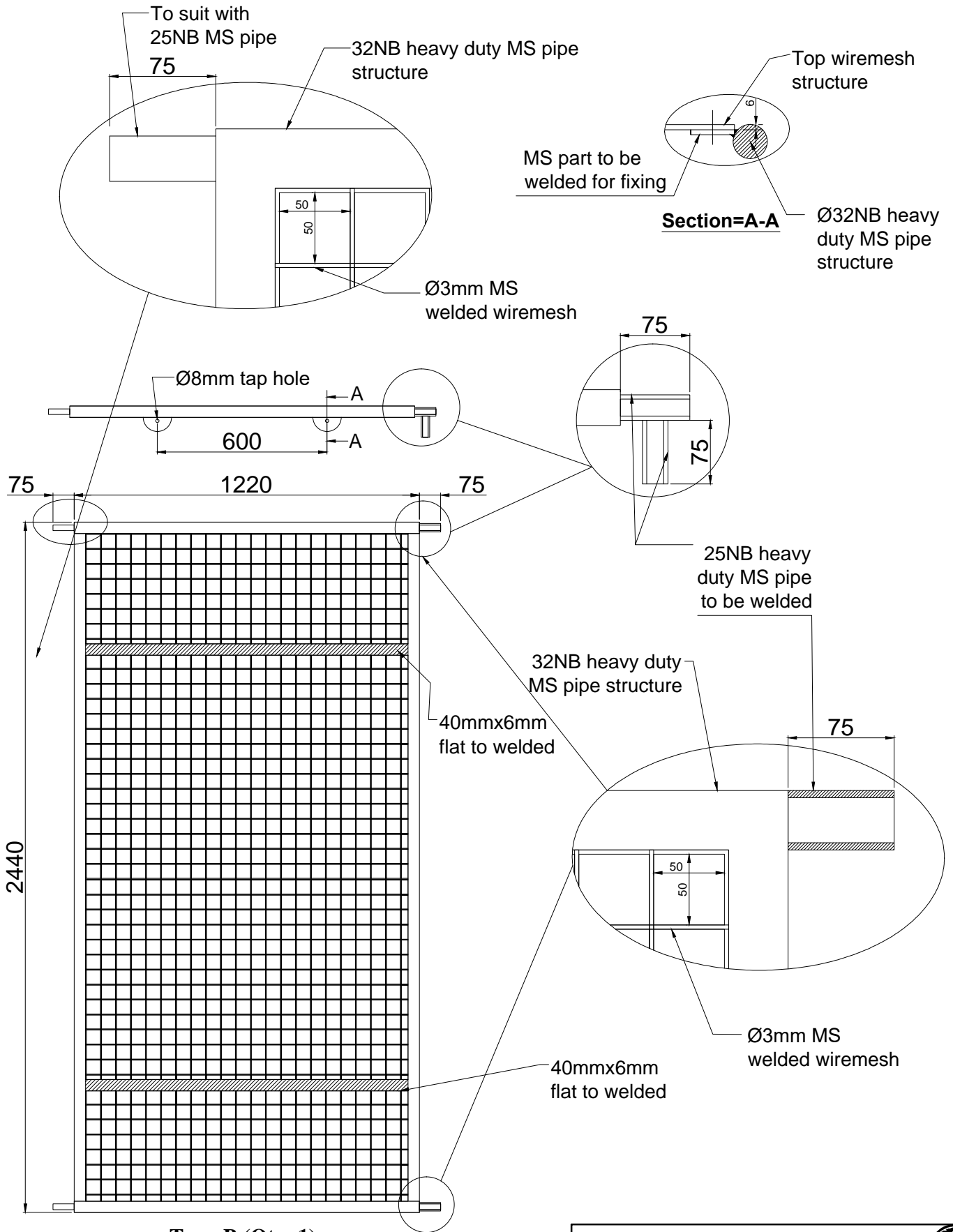


Type-D(Qty.-1)

Note:-

- 1) The entire structure metal should be paint finished using approved colour and shade of MRF brand with two or more coats on primer/surfacer of similar make.
- 2) All welded joints of pipe structure should be highly finished.
- 3) All connectors must be aligned properly for all joints.

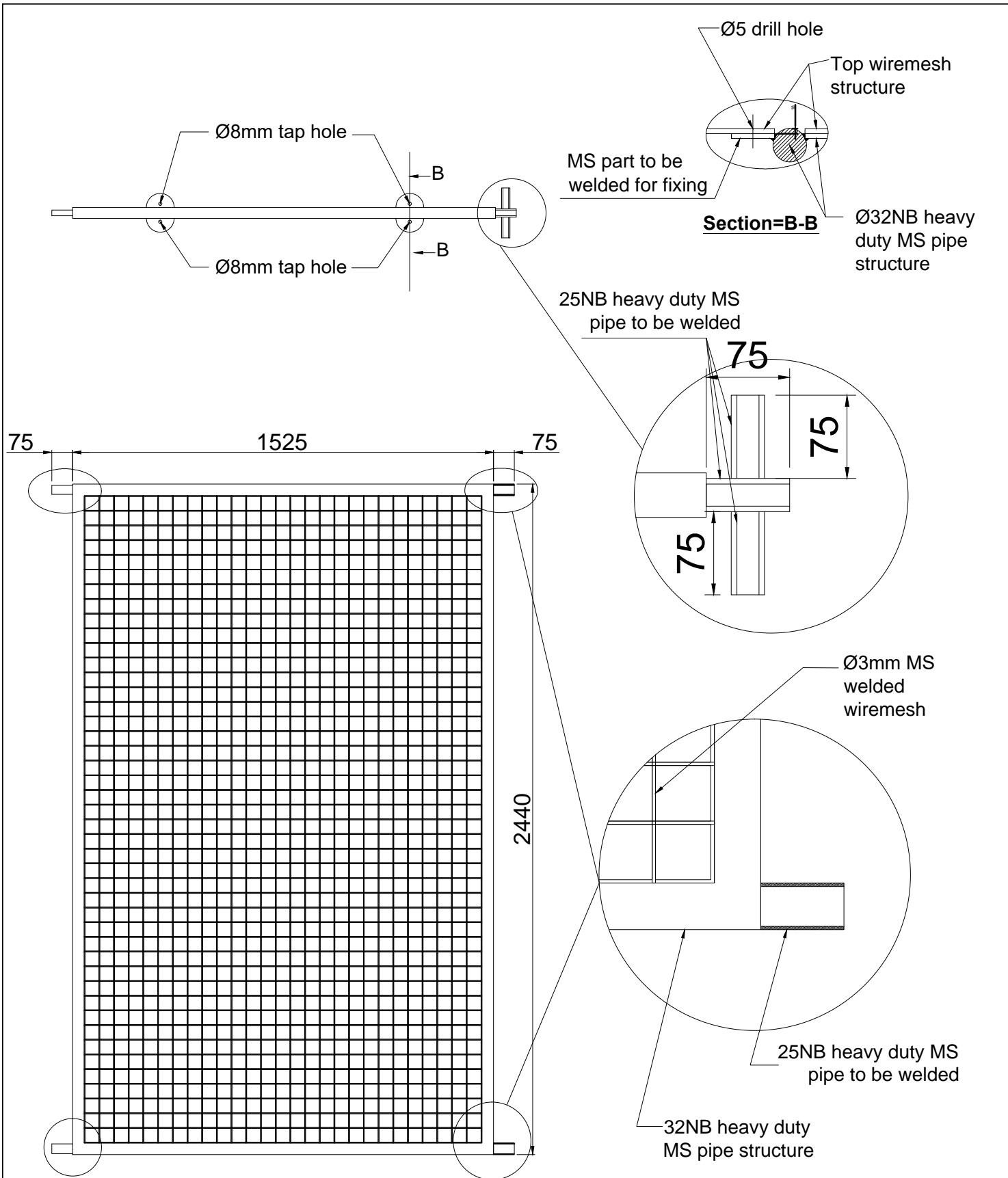
NATIONAL COUNCIL OF SCIENCE MUSEUMS			
UNIT: C.R.T.L.		PROJ.- CRTL	
DRG. NO. EX.MN/01/01/23/F	DATE 31/01/23	SCALE 0 : 00	TOLERANCE ± 0.25mm
TITLE:- Wiremesh Structure-1 Left side			NO OFF.
DRN. BY Minakshi Dutta	CKD. BY	APPRD. BY	



Note:-

- 1) The entire structure metal should be paint finished using approved colour and shade of MRF brand with two or more coats on primer/surfacer of similar make.
- 2) All welded joints of pipe structure should be highly finished.
- 3) All connectors must be aligned properly for all joints.

NATIONAL COUNCIL OF SCIENCE MUSEUMS			
UNIT: C.R.T.L.		PROJ.- CRTL	
DRG. NO. EX.MN/01/01/23/H	DATE 31/01/23	SCALE 0 : 00	TOLERANCE ± 0.25mm
TITLE:- Wiremesh Structure-1 Right side			NO OFF.
DRN. BY Minakshi Dutta		CKD. BY	APPRD. BY

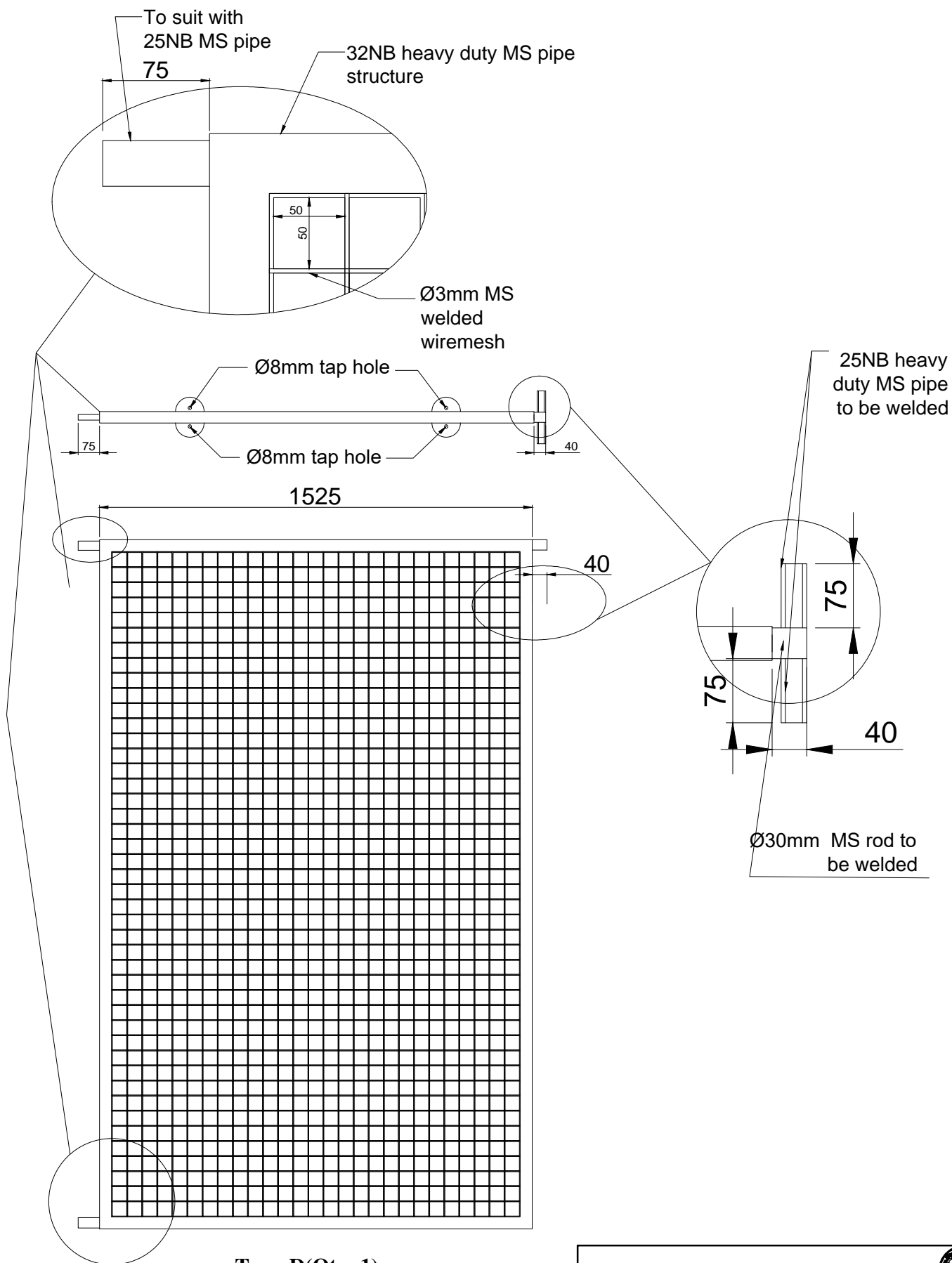


Type-C(Qty.-5)

Note:-

- 1) The entire structure metal should be paint finished using approved colour and shade of MRF brand with two or more coats on primer/surfacer of similar make.
- 2) All welded joints of pipe structure should be highly finished.
- 3) All connectors must be aligned properly for all joints.

NATIONAL COUNCIL OF SCIENCE MUSEUMS			
UNIT: C.R.T.L.		PROJ.- CRTL	
DRG. NO. EX.MN/01/01/23/K	DATE 31/01/23	SCALE 0 : 00	TOLERANCE ± 0.25mm
TITLE:- Wiremesh Structure-1 Middle			NO OFF.
DRN. BY Minakshi Dutta	CKD. BY	APPRD. BY	



Type-D(Qty.-1)

Note:-

- 1) The entire structure metal should be paint finished using approved colour and shade of MRF brand with two or more coats on primer/surfacers of similar make.
- 2) All welded joints of pipe structure should be highly finished.
- 3) All connectors must be aligned properly for all joints.

NATIONAL COUNCIL OF SCIENCE MUSEUMS			
UNIT: C.R.T.L.		PROJ.- CRTL	
DRG. NO. EX.MN/01/01/23/L	DATE 31/01/23	SCALE 0 : 00	TOLERANCE ± 0.25mm
TITLE:- Wiremesh Structure-1 Middle			NO OFF.
DRN. BY Minakshi Dutta	CKD. BY	APPRD. BY	

